



Compact Surface Mount Loop Powered Intelligent Display



measuring
·
monitoring

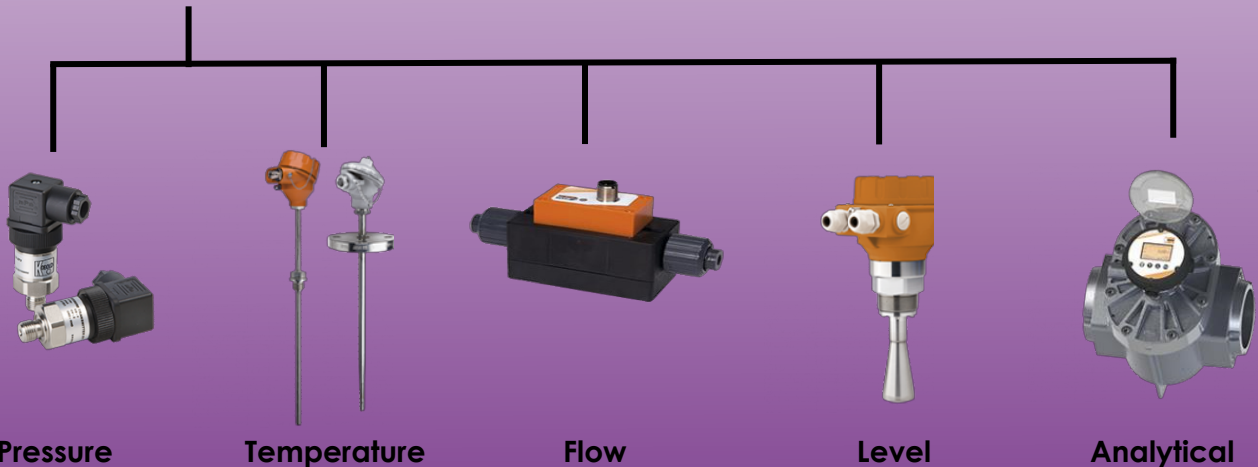
Quality and Simplicity, out of the box.

ALP



- Sealed loop powered instrument module
- No additional power supply required
- CNC machined stainless steel housing
- Surface mount fixing (3-holes)
- Intelligent 6-Digit LCD display
- Single pole change over relay – NO/NC
- User set display messaging
- 5000 Point Logger with USB Interface
- M12x1 lead connections – pre-wired
- Easy fit and connect
- Ideal for local indication and monitoring of process values from obscure sensor locations
- Ideal for upgrading blind analogue process instruments

Versatility



KOBOLD companies worldwide:

ARGENTINA, AUSTRALIA, AUSTRIA, BELGIUM, BULGARIA, CANADA, CHILE, CHINA, COLOMBIA, CZECHIA, EGYPT, FRANCE, GERMANY, GREAT BRITAIN, HUNGARY, INDIA, INDONESIA, ITALY, MALAYSIA, MEXICO, NETHERLANDS, PERU, POLAND, REPUBLIC OF KOREA, ROMANIA, SINGAPORE, SPAIN, SWITZERLAND, TAIWAN, THAILAND, TUNISIA, TURKEY, USA, VIETNAM

KOBOLD Instruments UK Ltd
8/9 Brunts Business Centre,
Samuel Brunts Way,
Mansfield, Nottingham,
NG18 2AH
Phone: 01623 427701
Email: info.uk@kobold.com
Web: www.kobold-direct.co.uk



Compact Surface Mount Loop Powered Display Model ALP

Description

The ALP is a high-quality surface mount, loop powered process indicator with a volt-free changeover relay for switched output applications, and a datalogging function. The indicator is powered via the process instrument's loop current (4-20mA), providing a powerful display interface which also includes a selectable alert LED indication, triggered from the relay contact, as well as advanced messaging, allowing the user to display custom messages for pre-set input ranges or alarm activity. The relay can be turned off if required.

A single AA 3.6V lithium battery allows the display function and datalogging to continue mA loop current loss. This is useful for displaying error messages and maintains the log function, allowing the user to determine the loop loss period.

User-set scaling is provided to allow the user to set process ranges between -999999 and 999999. Math's functions are provided working on the actual (4 to 20) mA signal for requirements such as square root extraction. A 22-segment user-set linearization/correction function is also offered.

The ALP provides a powerful data logging function. Connect the USB cable (ZUB-KAB-12KUSB) to the dedicated Comms port for set-up and download. The number of log points can be set up to 5000; each point is time and date-stamped together with input process value (PV) and relay state information. The log rate is selectable in steps. The start of log can be delayed if required. Either fixed or rolling logs may be performed. From the USB port, the interfaced software reads the log and allows the user to save to a text file for export to other programs.

The ALP provides the perfect solution for displaying process instrument readings at practical viewing levels, sometimes not possible with compact instruments on congested process plants.

Technical Details

Electrical Input

Input	4-20mA
Accuracy	0.01 % (0.002 mA)
Stability	0.005 % (0.001 mA) Low
Signal Operating Threshold	< 1.0 mA

Input	0-20mA
Accuracy	0.01 % (0.002 mA)
Stability	0.005 % (0.001 mA) Low
Signal Operating Threshold	0 mA (only with battery fitted)

Maximum Current	±50 mA
Loop Voltage Drop	2.8 to 3.0 V
Protection	Resettable fuse 50 mA

Display

Standard Display Options	6 digits 14 segment input value plus "Warning"," Transmit", "NFC", "USB", "Log", icons, 8 segment log volume/signal indicators. Date and time. Custom messages for visual alarms/information. Relay condition
--------------------------	---

Decimal Place	0 to 5 Places
High Density LED	Alarm and warning options

Relay

Type	Single pole change-over (common, N/O, N/C)
Rating	48 VDC maximum @ 1 A (5 mA minimum) 28 VAC RMS maximum @ 1 A

Housing

Materials	Stainless steel case/bezel Polycarbonate screen cover
-----------	--

Electrical Connections	1x M12x1 8-Pin (PLC) 1x M12x1 5-Pin (Inst) 1x M12x1 5-Pin (USB)
------------------------	---

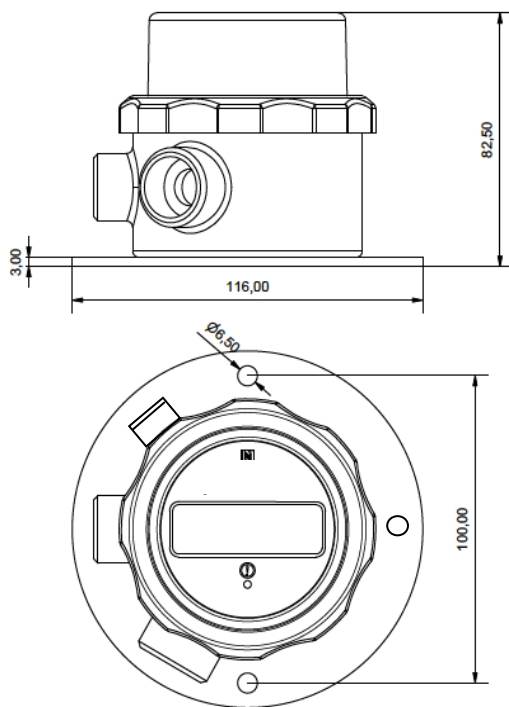
Protection	IP66
------------	------



Compact Surface Mount Loop Powered Display Model ALP

Applications

- Pressure indication and alarm switchcontrol from blind process instruments...
Flow
Level
Pressure
Temperature
Linear
Analytical
- Process indication at convenient locations and viewing height
- Additional alarm switch control, datalogging, and screen messaging
- Ideal solution where compact process instruments are obscured in the process plant, and visible indication is required
- Ideal solution in many level instrument applications for visible indication and low/high level alarm
- Ideal for dry-pump control
- Where local indication is preferred in alternative process units and decimal places, for example. 0-1000mbar or 0-100%, with alarm trigger for event recording, or screen messaging etc.



Order details (example: ALP-12-2-66-0)

Model	Electronics Loop Powered 4-20mA I/O with Switched Output	Housing Material	Data Download	IP Rating	Options
ALP	12 (1)	S = SS / Polycarbonate	2 = External USB	66	0= None Y= Special (describe in detail)

(1).Pin out configuration may differ between manufactures. If not to be used with a Kobold product, please advise the sensor type at time of order

M12 x M12 Instrument connection leads

Part code ZUB-KAB-12K-12k505 5-Pin 5M length
Part code ZUB-KAB-12K-12k510 5-Pin 10M length

Connection leads with DIN plug made to order

M12 Supply/Output connection leads

Part code ZUB-KAB-12K805 8-Pin 5M length
Part code ZUB-KAB-12K810 8-Pin 10M length

Part code ZUB-KAB-12KUSB USB 2M length Max

No responsibility taken for errors:
Subject to change without notice